

表1:1995至2023年有效许可证持证人的年龄分布

Year Age Group	1995 [#]	1996	1997	1998	1999	2000	2001	2002	2003	2004	2005	2006	2007	2008	2009	2010	2011	2012	2013	2014	2015	2016	2017	2018	2019	2020	2021	2022	2023*
18-20	0	1,328	3,229	4,216	4,400	6,514	4,552	2,886	2,878	2,870	2,696	2,601	2,609	3,605	3,501	3,533	3,680	3,878	3,405	3,285	3,299	3,115	3,021	2,330	2,414	2,214	1,689	1,356	1,530
21-30	1	3,719	8,144	13,262	17,882	21,612	27,426	25,272	27,288	28,749	29,042	29,767	29,725	29,736	31,522	32,488	34,096	35,271	35,325	34,762	34,772	34,598	34,181	32,415	31,778	32,332	30,648	28,052	25,664
31-40	6	5,554	10,697	18,165	22,479	27,382	32,273	29,445	33,118	36,200	39,044	40,862	40,996	39,665	39,700	37,761	37,377	37,424	36,563	34,673	33,932	33,118	32,886	31,419	32,522	36,081	35,873	35,226	34,389
41-50	10	8,153	15,640	24,975	34,451	42,542	52,277	51,942	60,928	70,789	79,510	84,681	85,115	79,873	77,952	72,799	70,645	70,668	68,192	64,003	63,727	62,148	61,142	58,302	60,678	68,104	67,987	68,366	67,255
51-54	15	4,628	7,764	11,508	15,643	18,686	26,560	25,659	28,092	30,484	33,970	37,053	37,979	40,102	41,277	39,340	38,774	38,474	38,512	38,848	39,396	39,540	38,641	33,887	34,082	36,919	38,281	39,971	40,811
55-60	41	10,610	16,113	21,352	27,018	30,734	36,800	33,510	36,438	40,430	44,936	48,711	49,692	52,060	53,621	53,149	54,061	56,863	59,727	60,977	64,117	65,716	66,444	67,888	68,971	73,059	72,467	71,977	71,668
61-64	52	8,523	12,855	16,957	20,254	21,721	30,906	22,318	17,875	17,380	18,427	18,084	18,102	21,323	23,359	26,235	28,029	29,595	30,974	31,647	34,459	37,551	38,892	43,667	46,737	49,534	50,660	50,588	52,598
65-70	20	3,994	5,917	8,188	10,564	10,944	17,802	9,260	13,037	13,340	14,341	11,118	10,733	11,089	11,690	12,766	13,249	14,971	16,673	18,665	21,404	24,617	26,183	32,723	38,149	42,882	44,187	47,554	51,523
71-80	2	1,790	2,468	3,386	4,380	4,435	8,364	3,342	3,346	4,084	4,651	2,762	2,792	2,850	3,193	3,671	3,437	3,587	3,819	4,071	4,669	4,759	4,961	6,417	7,799	9,939	9,244	11,102	13,466
above 80	0	68	106	166	242	242	555	110	127	177	246	69	77	77	106	148	117	141	169	219	288	242	263	349	434	521	512	589	654
Total	147	48,367	82,933	122,175	157,313	184,812	237,515	203,744	223,127	244,503	266,863	275,708	277,820	280,380	285,921	281,890	283,465	290,872	293,359	291,150	300,063	305,404	306,614	309,397	323,564	351,585	351,548	354,781	359,558

註:

只反映1995年12月份的数字。

* 2023年的数字为截至2023年12月31日。

图1：2003至2023年有效许可证持证人的年龄分布(根据表1绘制)

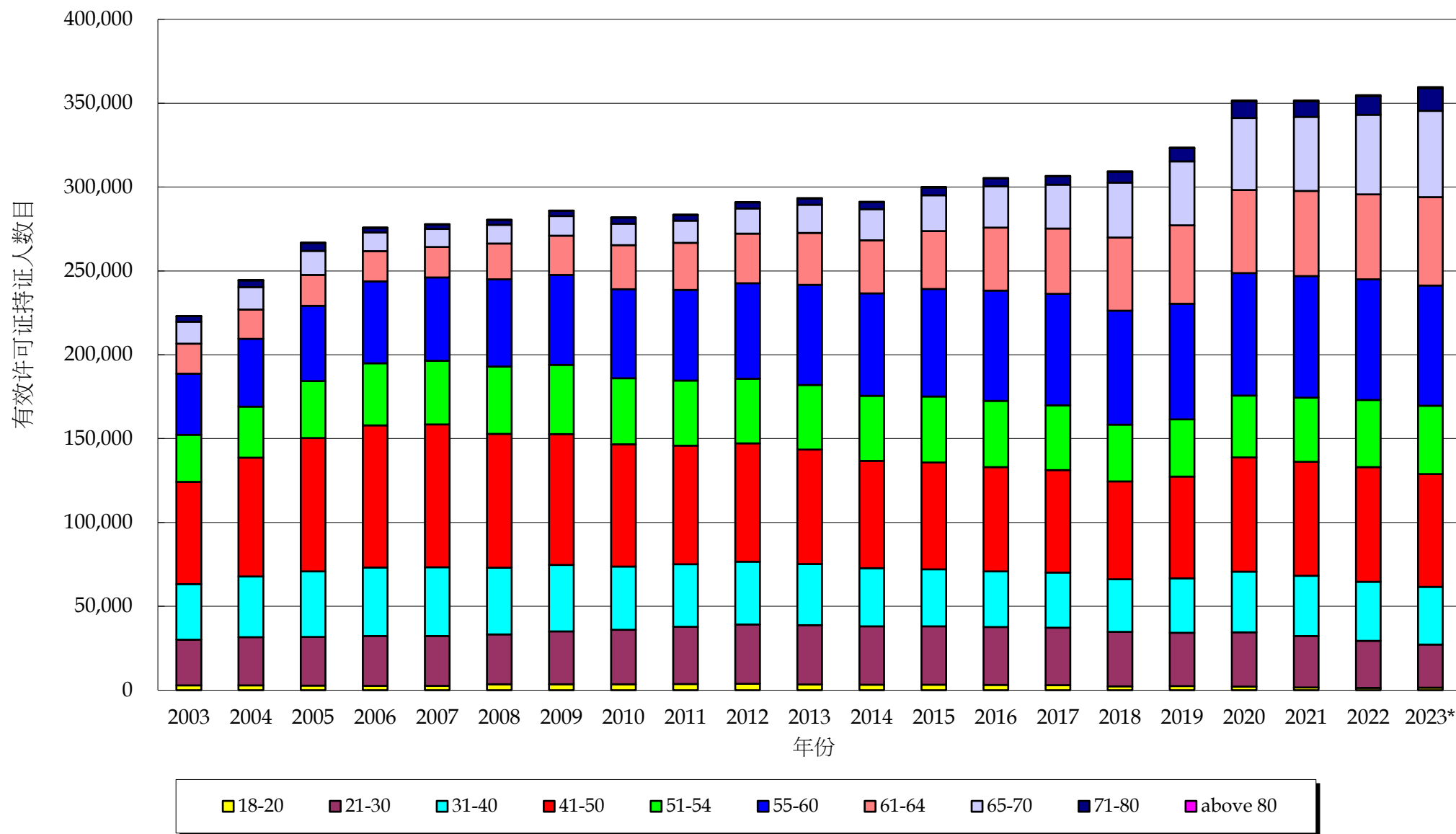
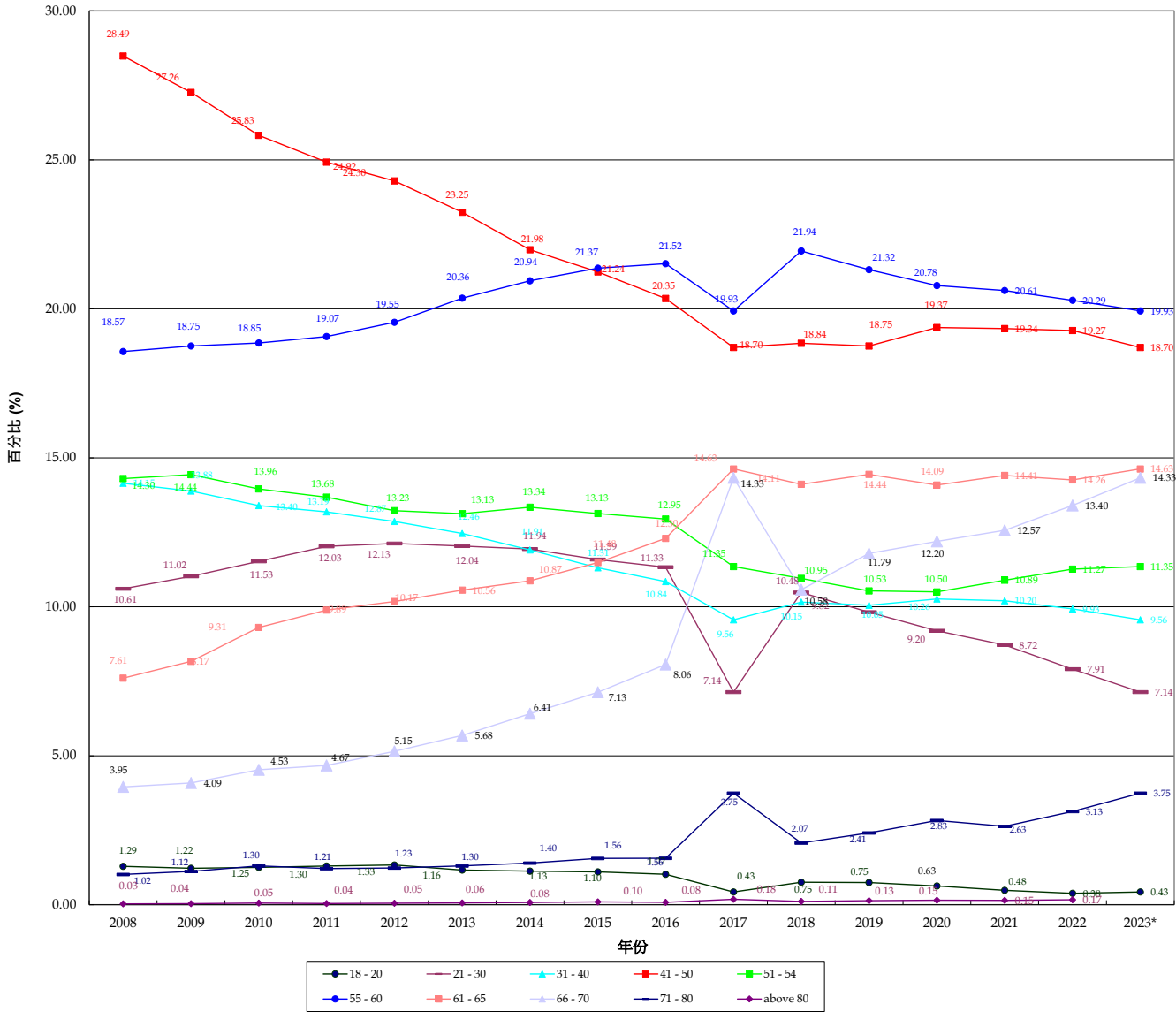


表 2：1995 至 2023 年按年龄组别划分的有效许可证持有人所占百分比

Age Group	Year	1995*		1996*		1997*		1998*		1999*		2000*		2001*		2002*		2003*		2004*		2005*		2006*		2007*		2008*		2009*		2010*		2011*		2012*		2013*		2014*		2015*		2016*		2017*		2018*		2019*		2020*		2021*		2022*		2023*		General Trend [†]
		%	%	%	%	%	%	%	%	%	%	%	%	%	%	%	%	%	%	%	%	%	%	%	%	%	%	%	%	%	%	%	%	%	%	%	%	%	%	%	%	%	%	%	%	%	%	%	%	%										
18 - 20	0	3.28	2.75	3.29	3.89	4.21	3.45	4.40	2.80	6.51	3.52	4.52	1.92	2.86	1.42	2.67	1.29	2.87	1.17	2.69	1.01	2.60	0.94	2.69	0.94	3.65	1.29	3.91	1.22	3.33	1.25	3.60	1.30	3.67	1.33	3.45	1.16	3.25	1.13	3.29	1.10	3.15	1.02	2.65	0.85	2.30	0.75	2.44	0.75	2.24	0.63	1.89	0.48	1.36	0.38	1.50	0.43	↑		
21 - 30	1	3.71	7.69	8.14	9.82	13.26	10.85	17.82	11.37	21.61	11.69	27.42	11.55	25.27	12.40	27.28	12.23	28.79	11.76	29.84	10.88	29.76	10.80	29.25	10.70	29.76	10.61	31.52	11.02	32.48	11.53	34.96	12.03	35.27	12.13	35.33	12.04	34.76	11.94	34.72	11.59	34.98	11.33	33.45	10.90	32.45	10.48	31.78	9.82	32.32	9.20	30.68	8.72	28.03	7.91	25.64	7.14	↓		
31 - 40	6	5.54	11.48	10.69	12.90	18.16	14.87	22.47	14.29	27.38	14.82	32.27	13.59	29.44	14.45	33.18	14.84	36.20	14.81	39.04	14.63	40.86	14.82	40.96	14.76	39.66	14.15	39.70	13.88	37.76	13.40	37.37	13.19	37.42	12.87	36.36	12.46	34.67	11.91	33.92	11.31	33.18	10.84	32.39	10.54	31.49	10.15	32.52	10.05	36.08	10.26	35.87	10.20	35.26	9.93	34.38	9.56	↓		
41 - 50	10	8.15	16.86	15.60	18.86	24.97	20.44	34.43	21.90	42.54	23.02	52.27	22.01	51.94	25.49	60.92	27.31	70.79	28.95	79.50	29.79	84.60	30.71	85.15	30.64	79.87	28.49	77.92	27.26	72.79	25.83	70.45	24.92	70.66	24.30	68.19	23.25	64.03	21.98	63.27	21.24	62.18	20.35	59.79	19.48	58.30	18.84	69.67	18.75	68.10	19.37	67.97	19.34	68.36	19.27	67.25	18.70	↓		
51 - 54	15	4.62	9.57	7.64	9.36	11.30	9.42	15.63	9.94	18.66	10.11	26.50	11.18	25.69	12.59	28.92	12.59	30.48	12.47	33.97	12.73	37.03	13.44	37.99	13.67	40.10	14.30	41.27	14.44	39.30	13.96	38.74	13.68	38.47	13.23	38.32	13.13	38.48	13.34	39.36	13.13	39.50	12.95	36.79	11.98	33.87	10.95	34.82	10.53	36.91	10.50	38.28	10.89	39.97	11.27	40.81	11.35	↑		
55 - 60	41	10.60	21.94	16.13	19.43	21.32	17.48	27.01	17.17	30.74	16.63	36.00	15.49	33.01	16.45	36.48	16.33	40.40	16.54	44.96	16.84	48.71	17.67	49.92	17.89	52.00	18.57	53.61	18.75	53.19	18.85	54.01	19.07	56.83	19.55	59.72	20.36	60.97	20.94	64.17	21.37	65.76	21.52	67.21	21.91	67.88	21.94	68.97	21.32	73.09	20.78	72.40	20.61	71.97	20.29	71.68	19.93	↓		
61 - 65	52	8.33	17.62	12.85	15.50	16.97	13.88	20.24	12.87	21.21	11.75	30.96	13.01	22.38	10.95	17.85	8.01	17.80	7.11	18.42	6.91	18.04	6.56	18.10	6.52	21.33	7.61	23.39	8.17	26.25	9.31	28.02	9.89	29.95	10.17	30.97	10.56	31.67	10.87	34.49	11.48	37.51	12.30	40.48	13.20	43.67	14.11	46.73	14.44	49.54	14.09	50.60	14.41	50.88	14.26	52.98	14.63	↑		
66 - 70	20	3.94	8.26	5.91	7.13	8.18	6.70	10.64	6.72	10.94	5.92	17.80	7.50	9.20	4.54	13.07	5.84	13.30	5.46	14.31	5.37	11.18	4.03	10.73	3.86	11.89	3.95	11.60	4.09	12.76	4.53	13.29	4.67	14.97	5.15	16.87	5.68	18.65	6.41	21.04	7.13	24.67	8.06	28.98	9.26	32.73	10.58	38.19	11.79	42.82	12.20	44.19	12.57	47.54	13.40	51.52	14.33	↑		
71 - 80	2	1.70	3.70	2.68	2.98	3.86	2.77	4.80	2.78	4.43	2.40	8.34	3.52	3.34	1.64	3.34	1.50	4.04	1.67	4.61	1.74	2.76	1.00	2.79	1.00	2.80	1.02	3.19	1.12	3.67	1.30	3.47	1.21	3.87	1.23	3.49	1.30	4.07	1.40	4.69	1.56	4.79	1.56	5.49	1.78	6.47	2.07	7.29	2.41	9.59	2.83	9.24	2.63	11.02	3.13	13.46	3.75	↑		
above 80	0	68	0.14	106	0.13	166	0.14	242	0.15	242	0.13	555	0.23	110	0.05	127	0.06	177	0.07	246	0.09	69	0.03	77	0.03	77	0.03	106	0.04	148	0.05	117	0.04	141	0.05	169	0.06	219	0.08	288	0.10	242	0.08	289	0.09	349	0.11	434	0.13	521	0.15	512	0.15	589	0.17	654	0.18	↑		
Total	147	48,367	100.0	82,933	100.0	122,175	100.0	157,933	100.0	184,812	100.0	237,215	100.0	203,744	100.0	223,127	100.0	244,503	100.0	266,863	100.0	275,708	100.0	277,820	100.0	280,380	100.0	285,921	100.0	281,890	100.0	283,465	100.0	280,872	100.0	293,359	100.0	291,150	100.0	300,063	100.0	305,404	100.0	306,742	100.0	309,397	100.0	323,564	100.0	331,385	100.0	331,548	100.0	354,781	100.0	359,538	100.0			

注：
 # 只反映1995年12月的数字。
 * 2023年的数字为截至2023年12月31日所得数字。
 ^ 与 2022年的作比较。

图 2：2008 - 2023 年按年龄组别划分的有效许可证持有人所占百分比



1996-2023 年的年龄分布
逐年计算的转变 (%)

Year Age Group	1996	1997	%	1998	%	1999	%	2000	%	2001	%	2002	%	2003	%	2004	%	2005	%	2006	%	2007	%	2008	%	2009	%	2010	%	2011	%	2012	%	2013	%	2014	%	2015	%	2016	%	2017	%	2018	%	2019	%	2020	%	2021	%	2022	%	2023*	%	General Trend
18 - 20	1,328	3,229	143.15	4,216	30.57	4,400	4.36	6,514	48.05	4,552	-30.12	2,886	-36.60	2,878	-0.28	2,870	-0.28	-2.696	-6.06	2,601	-3.52	2,609	0.31	3,605	38.18	3,501	-2.88	3,533	0.91	3,680	4.16	3,878	5.380	3,405	-12.197	3,285	-3.524	3,299	0.426	3,315	-5.577	2,615	-16.05	2,330	-10.90	2,414	3.61	2,214	-8.29	1,689	-23.71	1,356	-38.75	1,530	12.83	↑
21 - 30	3,719	8,144	118.98	13,262	62.84	17,882	34.84	21,612	20.86	27,426	26.90	25,272	-7.85	27,288	7.98	28,749	5.35	29,042	1.02	29,767	2.50	29,725	-0.14	29,736	0.04	31,522	6.01	32,488	3.06	34,096	4.95	35,271	3.45	35,325	0.153	34,762	-1.59	34,772	0.03	34,598	-0.50	33,445	-3.33	32,415	-3.08	31,778	-1.97	32,332	1.74	30,648	-5.21	28,052	-13.24	25,664	-8.51	↑
31 - 40	5,554	10,697	92.60	18,165	69.81	22,479	23.75	27,382	21.81	32,273	17.86	29,445	-8.76	33,118	12.47	36,200	9.31	39,044	7.86	40,862	4.66	40,986	0.33	39,665	-3.25	39,700	0.09	37,761	-4.88	37,377	-1.02	37,424	0.126	36,563	-2.301	34,673	-5.169	33,932	-2.137	33,118	-2.399	32,339	-2.35	31,419	-2.84	32,522	3.51	36,081	10.94	35,873	-0.58	35,236	-2.37	34,389	-2.38	↓
41 - 50	8,153	15,640	91.83	24,975	59.69	34,451	37.94	42,542	23.49	52,277	22.88	51,942	-0.64	60,928	17.30	70,789	16.18	79,510	12.32	84,681	6.50	85,115	0.51	79,873	-6.16	77,952	-2.41	72,799	-6.61	70,645	-2.96	70,668	0.033	68,192	-3.504	64,003	-6.143	63,727	-0.431	62,148	-2.478	59,739	-3.88	58,302	-2.41	60,678	4.08	68,104	12.24	67,987	-0.17	68,366	0.38	67,255	-1.63	↓
51 - 54	4,628	7,764	67.76	11,508	48.22	15,643	35.93	18,686	19.45	26,560	42.14	25,659	-3.39	28,092	9.48	30,484	8.51	33,970	11.44	37,053	9.08	37,979	2.50	40,102	5.59	41,277	2.93	39,340	-4.69	38,774	-1.44	38,474	-0.774	38,512	0.099	38,848	0.872	39,396	1.411	39,540	0.366	36,749	-7.06	33,887	-7.79	34,082	0.58	36,919	8.32	38,281	3.69	39,971	8.27	40,811	2.10	↓
55 - 60	10,610	16,113	51.87	21,352	32.51	27,018	26.54	30,734	13.75	36,800	19.74	33,510	-8.94	36,438	8.74	40,430	10.96	44,936	11.35	48,711	8.40	49,692	2.01	52,060	4.77	53,621	3.00	53,149	-0.88	54,061	1.72	56,863	5.38	59,727	5.037	60,977	2.09	64,117	5.15	65,716	2.49	67,212	2.28	67,888	1.01	68,971	1.60	73,059	5.93	72,467	-0.81	71,977	-1.48	71,668	-0.43	↑
61 - 65	8,523	12,855	50.83	16,957	31.91	20,254	19.44	21,721	7.24	30,906	42.29	22,318	-27.79	17,875	-19.91	17,380	-2.77	18,427	6.02	18,084	-1.86	18,102	0.10	21,323	17.79	23,359	9.55	26,235	12.31	28,029	6.84	29,595	5.587	30,974	4.660	31,647	2.173	34,459	8.886	37,551	8.973	40,487	7.82	43,667	7.85	46,737	7.03	49,534	5.98	50,660	2.27	50,588	2.13	52,598	3.97	↑
66 - 70	3,994	5,917	48.15	8,188	38.38	10,564	29.02	10,944	3.60	17,802	62.66	9,260	-47.98	13,037	40.79	13,340	2.32	14,341	7.50	11,118	-22.47	10,733	-3.46	11,089	3.32	13,690	5.42	12,766	-9.20	13,249	3.78	14,971	12.997	16,673	11.369	18,665	13.947	21,404	14.675	24,617	15.011	28,398	15.36	32,723	15.23	38,149	16.58	42,882	12.41	44,187	3.04	47,554	10.90	51,523	8.35	↓
71 - 80	1,790	2,468	37.88	3,386	37.20	4,380	29.36	4,435	1.26	6,364	88.59	3,342	-60.04	3,346	0.12	4,084	22.06	4,651	13.88	2,762	-40.61	2,792	1.09	2,850	2.08	3,193	12.04	3,671	14.97	3,437	-6.37	3,587	4.364	3,819	6.468	4,071	6.599	4,669	14.689	4,759	1.928	5,469	14.92	6,417	17.33	7,799	21.54	9,939	27.44	9,244	-6.99	11,102	11.70	13,466	21.29	↑
above 80	68	106	55.88	166	56.60	242	45.78	242	0.00	555	129.34	110	-80.18	127	15.45	177	39.37	246	38.98	69	-71.95	77	11.59	77	0.00	106	37.66	148	39.62	117	-20.95	141	20.513	169	19.858	219	29.586	288	31.507	242	-15.972	289	19.42	349	20.76	434	24.36	521	20.05	512	-1.73	589	13.05	654	11.04	↓
Total	48,367	82,933	71.47	122,175	47.32	157,313	28.76	184,812	17.48	237,515	28.52	203,744	-14.22	223,127	9.51	244,503	9.58	266,863	9.15	275,708	3.31	277,820	0.77	280,380	0.92	285,921	1.98	281,890	-1.41	283,465	0.56	290,872	2.61	293,359	0.86	291,150	-0.75	300,063	3.06	305,404	1.78	306,742	0.44	309,397	0.87	323,564	5.48	351,585	8.66	351,548	-0.01	354,781	0.91	359,558	1.35	

注:
* 2023 年的数字为截至2023年12月31日所得数字。
^ 与 2022 年的%比较。