

**Table 1 : Age Distribution of Valid Permit Holders 1995 - 2008**

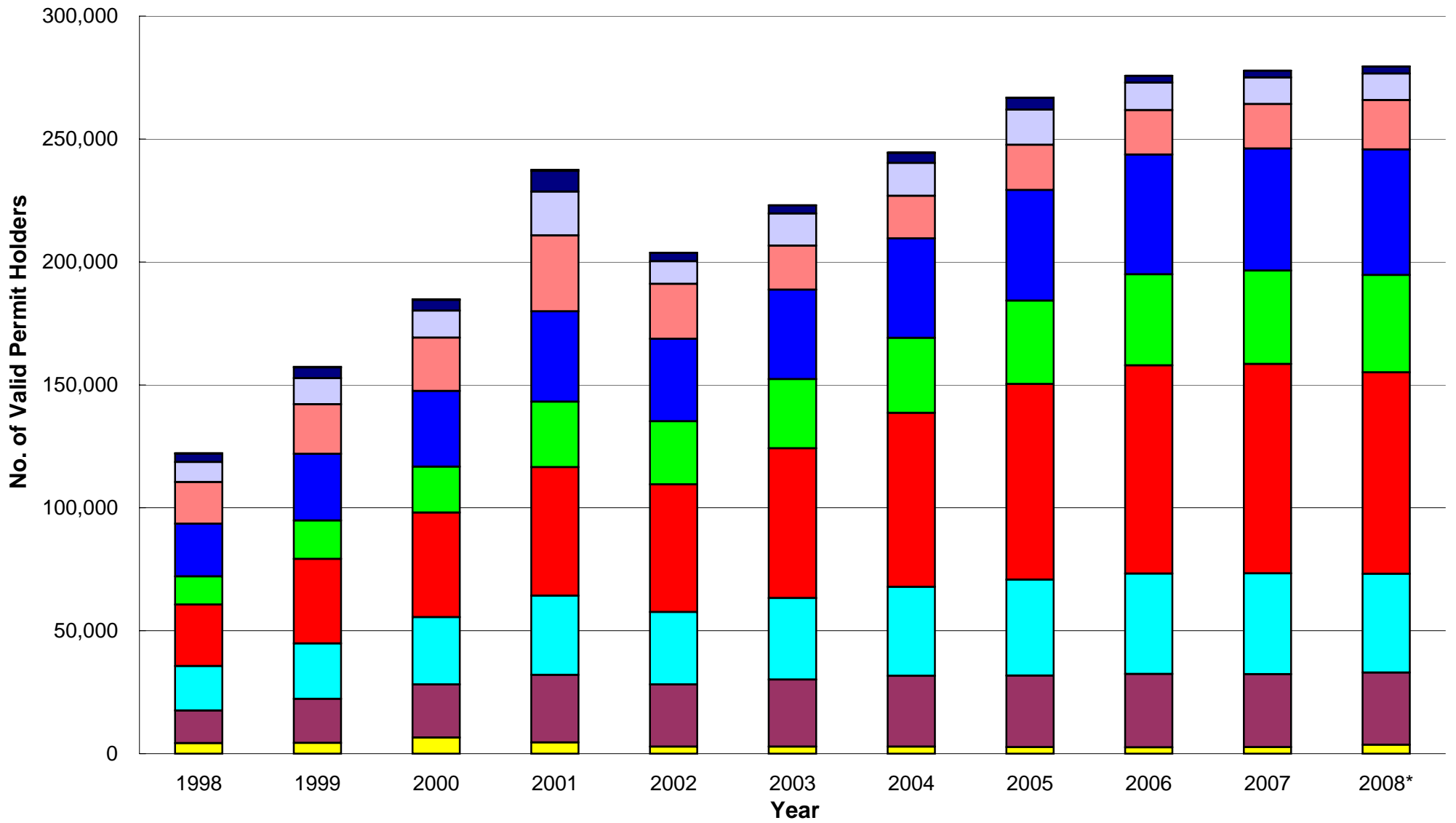
<b>Year</b> <b>Age Group</b>	<b>1995<sup>#</sup></b>	<b>1996</b>	<b>1997</b>	<b>1998</b>	<b>1999</b>	<b>2000</b>	<b>2001</b>	<b>2002</b>	<b>2003</b>	<b>2004</b>	<b>2005</b>	<b>2006</b>	<b>2007</b>	<b>2008<sup>*</sup></b>
18-20	0	1,328	3,229	4,216	4,400	6,514	4,552	2,886	2,878	2,870	2,696	2,601	2,609	3,557
21-30	1	3,719	8,144	13,262	17,882	21,612	27,426	25,272	27,288	28,749	29,042	29,767	29,725	29,419
31-40	6	5,554	10,697	18,165	22,479	27,382	32,273	29,445	33,118	36,200	39,044	40,862	40,996	40,161
41-50	10	8,153	15,640	24,975	34,451	42,542	52,277	51,942	60,928	70,789	79,510	84,681	85,115	81,895
51-54	15	4,628	7,764	11,508	15,643	18,686	26,560	25,659	28,092	30,484	33,970	37,053	37,979	39,597
55-60	41	10,610	16,113	21,352	27,018	30,734	36,800	33,510	36,438	40,430	44,936	48,711	49,692	51,110
61-65	52	8,523	12,855	16,957	20,254	21,721	30,906	22,318	17,875	17,380	18,427	18,084	18,102	20,093
66-70	20	3,994	5,917	8,188	10,564	10,944	17,802	9,260	13,037	13,340	14,341	11,118	10,733	10,789
71-80	2	1,790	2,468	3,386	4,380	4,435	8,364	3,342	3,346	4,084	4,651	2,762	2,792	2,839
above 80	0	68	106	166	242	242	555	110	127	177	246	69	77	84
<b>Total</b>	147	48,367	82,933	122,175	157,313	184,812	237,515	203,744	223,127	244,503	266,863	275,708	277,820	279,544

**Note :**

<sup>#</sup> Figures in 1995 include the month of December only.

<sup>\*</sup> Figures in 2008 are as of 2008-06-30.

**Figure 1 : Age Distribution of Valid Permit Holders 1998 - 2008 (From Table 1)**



18-20	21-30	31-40	41-50	51-54	55-60	61-65	66-70	71-80	above 80
-------	-------	-------	-------	-------	-------	-------	-------	-------	----------

**Table 2 : Percentage of the Number of Valid Permit Holders by Age Group 1996 - 2008**

Year Age Group	%	1995 <sup>#</sup>		1996		1997		1998		1999		2000		2001		2002		2003		2004		2005		2006		2007		2008 <sup>*</sup>		General Trend <sup>^</sup>
					%		%		%		%		%		%		%		%		%		%		%		%		%	
18 - 20	0	1,328	2.75	3,229	3.89	4,216	3.45	4,400	2.80	6,514	3.52	4,552	1.92	2,886	1.42	2,878	1.29	2,870	1.17	2,696	1.01	2,601	0.94	2,609	0.939	3,557	1.272		↑	
21 - 30	1	3,719	7.69	8,144	9.82	13,262	10.85	17,882	11.37	21,612	11.69	27,426	11.55	25,272	12.40	27,288	12.23	28,749	11.76	29,042	10.88	29,767	10.80	29,725	10.699	29,419	10.524		↓	
31 - 40	6	5,554	11.48	10,697	12.90	18,165	14.87	22,479	14.29	27,382	14.82	32,273	13.59	29,445	14.45	33,118	14.84	36,200	14.81	39,044	14.63	40,862	14.82	40,996	14.756	40,161	14.367		↓	
41 - 50	10	8,153	16.86	15,640	18.86	24,975	20.44	34,451	21.90	42,542	23.02	52,277	22.01	51,942	25.49	60,928	27.31	70,789	28.95	79,510	29.79	84,681	30.71	85,115	30.637	81,895	29.296		↓	
51 - 54	15	4,628	9.57	7,764	9.36	11,508	9.42	15,643	9.94	18,686	10.11	26,560	11.18	25,659	12.59	28,092	12.59	30,484	12.47	33,970	12.73	37,053	13.44	37,979	13.670	39,597	14.165		↑	
55 - 60	41	10,610	21.94	16,113	19.43	21,352	17.48	27,018	17.17	30,734	16.63	36,800	15.49	33,510	16.45	36,438	16.33	40,430	16.54	44,936	16.84	48,711	17.67	49,692	17.886	51,110	18.283		↑	
61 - 65	52	8,523	17.62	12,855	15.50	16,957	13.88	20,254	12.87	21,721	11.75	30,906	13.01	22,318	10.95	17,875	8.01	17,380	7.11	18,427	6.91	18,084	6.56	18,102	6.516	20,093	7.188		↑	
66 - 70	20	3,994	8.26	5,917	7.13	8,188	6.70	10,564	6.72	10,944	5.92	17,802	7.50	9,260	4.54	13,037	5.84	13,340	5.46	14,341	5.37	11,118	4.03	10,733	3.863	10,789	3.859		↓	
71 - 80	2	1,790	3.70	2,468	2.98	3,386	2.77	4,380	2.78	4,435	2.40	8,364	3.52	3,342	1.64	3,346	1.50	4,084	1.67	4,651	1.74	2,762	1.00	2,792	1.005	2,839	1.016		↑	
above 80	0	68	0.14	106	0.13	166	0.14	242	0.15	242	0.13	555	0.23	110	0.05	127	0.06	177	0.07	246	0.09	69	0.03	77	0.028	84	0.030		↑	
<b>Total</b>		147	48,367	100.00	82,933	100.00	122,175	100.00	157,313	100.00	184,812	100.00	237,515	100.00	203,744	100.00	223,127	100.00	244,503	100.00	266,863	100.00	275,708	100.00	277,820	100.00	279,544	100.00		

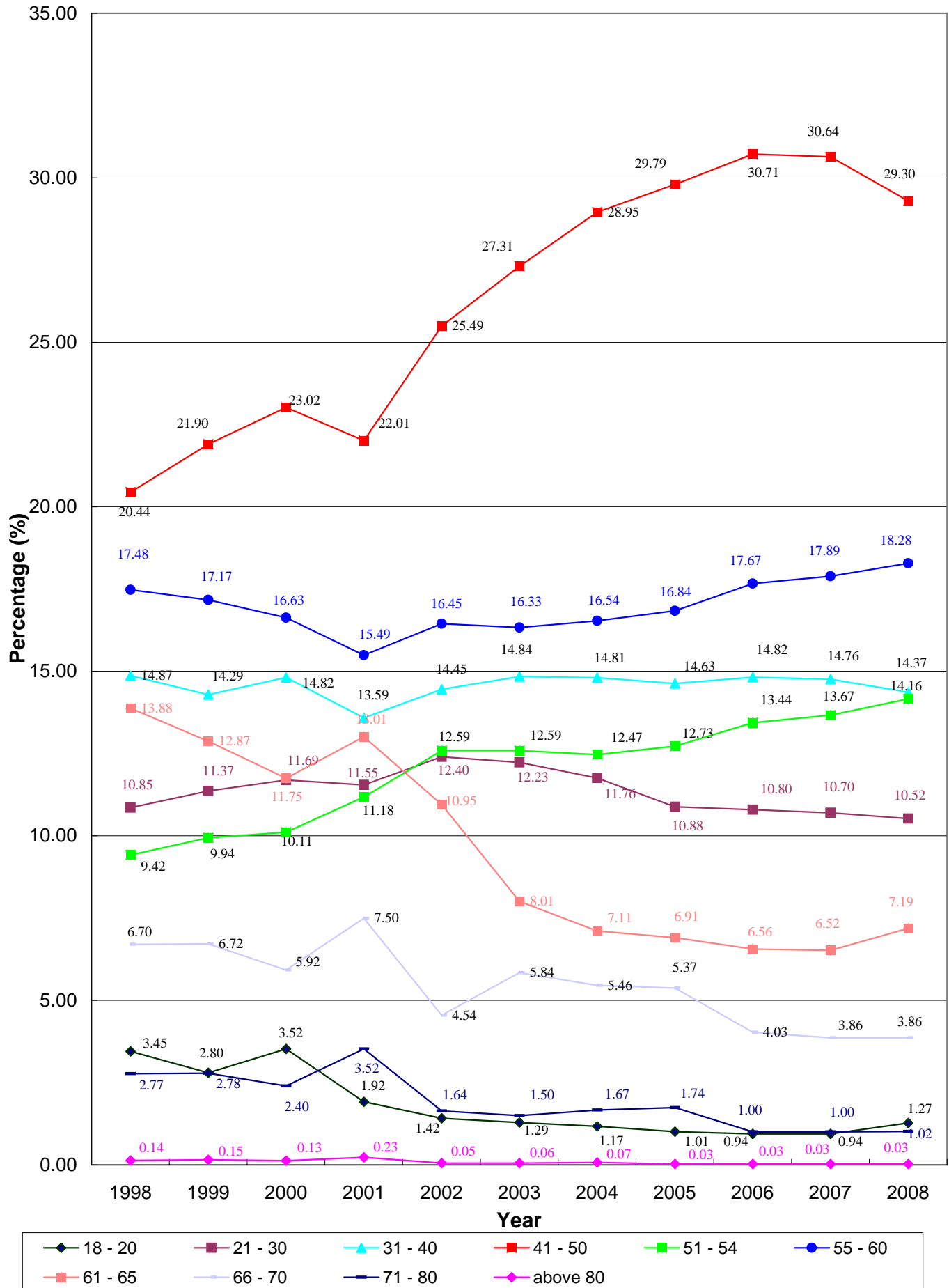
**Note :**

<sup>#</sup> Figures in 1995 include the month of December only.

<sup>\*</sup> Figures in 2008 are as of 2008-06-30.

<sup>^</sup> Compare with the % in 2007.

**Figure 2 : Percentage of the Number of Valid Permit Holders by Age Group 1998 - 2008 (From Table 2)**



**Age Distribution 1996-2008  
Year-On-Year Change (%)**

<b>Year Age Group</b>	<b>1996</b>	<b>1997</b>	<b>%</b>	<b>1998</b>	<b>%</b>	<b>1999</b>	<b>%</b>	<b>2000</b>	<b>%</b>	<b>2001</b>	<b>%</b>	<b>2002</b>	<b>%</b>	<b>2003</b>	<b>%</b>	<b>2004</b>	<b>%</b>	<b>2005</b>	<b>%</b>	<b>2006</b>	<b>%</b>	<b>2007</b>	<b>%</b>	<b>2008*</b>	<b>%</b>
<b>18 - 20</b>	1,328	3,229	143.15	4,216	30.57	4,400	4.36	6,514	48.05	4,552	-30.12	2,886	-36.60	2,878	-0.28	2,870	-0.28	2,696	-6.06	2,601	-3.52	2,609	0.31	3,557	36.34
<b>21 - 30</b>	3,719	8,144	118.98	13,262	62.84	17,882	34.84	21,612	20.86	27,426	26.90	25,272	-7.85	27,288	7.98	28,749	5.35	29,042	1.02	29,767	2.50	29,725	-0.14	29,419	-1.03
<b>31 - 40</b>	5,554	10,697	92.60	18,165	69.81	22,479	23.75	27,382	21.81	32,273	17.86	29,445	-8.76	33,118	12.47	36,200	9.31	39,044	7.86	40,862	4.66	40,996	0.33	40,161	-2.04
<b>41 - 50</b>	8,153	15,640	91.83	24,975	59.69	34,451	37.94	42,542	23.49	52,277	22.88	51,942	-0.64	60,928	17.30	70,789	16.18	79,510	12.32	84,681	6.50	85,115	0.51	81,895	-3.78
<b>51 - 54</b>	4,628	7,764	67.76	11,508	48.22	15,643	35.93	18,686	19.45	26,560	42.14	25,659	-3.39	28,092	9.48	30,484	8.51	33,970	11.44	37,053	9.08	37,979	2.50	39,597	4.26
<b>55 - 60</b>	10,610	16,113	51.87	21,352	32.51	27,018	26.54	30,734	13.75	36,800	19.74	33,510	-8.94	36,438	8.74	40,430	10.96	44,936	11.15	48,711	8.40	49,692	2.01	51,110	2.85
<b>61 - 65</b>	8,523	12,855	50.83	16,957	31.91	20,254	19.44	21,721	7.24	30,906	42.29	22,318	-27.79	17,875	-19.91	17,380	-2.77	18,427	6.02	18,084	-1.86	18,102	0.10	20,093	11.00
<b>66 - 70</b>	3,994	5,917	48.15	8,188	38.38	10,564	29.02	10,944	3.60	17,802	62.66	9,260	-47.98	13,037	40.79	13,340	2.32	14,341	7.50	11,118	-22.47	10,733	-3.46	10,789	0.52
<b>71 - 80</b>	1,790	2,468	37.88	3,386	37.20	4,380	29.36	4,435	1.26	8,364	88.59	3,342	-60.04	3,346	0.12	4,084	22.06	4,651	13.88	2,762	-40.61	2,792	1.09	2,839	1.68
<b>above 80</b>	68	106	55.88	166	56.60	242	45.78	242	0.00	555	129.34	110	-80.18	127	15.45	177	39.37	246	38.98	69	-71.95	77	11.59	84	9.09
<b>Total</b>	48,367	82,933	71.47	122,175	47.32	157,313	28.76	184,812	17.48	237,515	28.52	203,744	-14.22	223,127	9.51	244,503	9.58	266,863	9.15	275,708	3.31	277,820	0.77	279,544	0.62

**Note : \* Figures are as of 2008-06-30.**